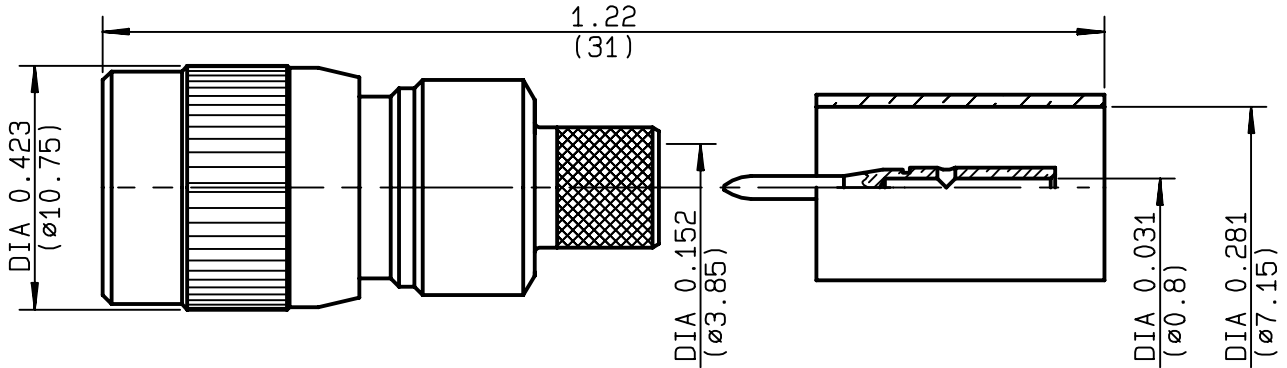


**STRAIGHT PLUG CRIMP TYPE
CABLE 6.7/75 D**

R129.087.100
SERIES V1.6-5.6



NOMINAL IMPEDANCE	75 Ω	CABLES : BT2003
FREQUENCY RANGE	0-1 GHz	
TEMPERATURE RATING	-55/+155 °C	
V.S.W.R	1.1 + x F(GHz)Maxi	
RF INSERTION LOSS	NA √F(GHz) dB Maxi	
VOLTAGE RATING	1000 Veff Maxi	
DIELECTRIC WITHSTANDING VOLTAGE	1500 Veff Mini	
INSULATION RESISTANCE	500 MΩMini	OTHERS CHARACTERISTICS
HERMETIC SEAL	NA Atm.cm ³ /s	CABLE RETENTION 220 N Mini
LEAKAGE (pressurized only)	NA	CENTER CONTACT RETENTION
MECHANICAL DURABILITY	Cycles	Axial force - mating end 27 N Mini
WEIGHT	8.25 gr	Axial force - opposite end 27 N Mini
SPECIFICATION		Torque NA cm.N Mini
		RECOMMENDED TORQUES
		Mating NA cm.N
		Panel nut NA cm.N
		Clamp nut NA cm.N

CONNECTOR PARTS	MATERIALS	FINISH	(all values are given in micrometers)
BODY	BRASS	NICKEL 2	
OUTER CONTACT	BRONZE	GOLD 1.3 OVER NICKEL 2	
CENTER CONTACT	BRASS	GOLD 1.3 OVER NICKEL 2	
INSULATOR	PTFE	-	
GASKET	-	-	
OTHERS PIECES	BRASS	NICKEL 2	

ISSUE 9648A00	CREATION DATE 02/07/1996	FILE PART-NUMBER 96-0106-162
-------------------------	------------------------------------	--



GERALD U

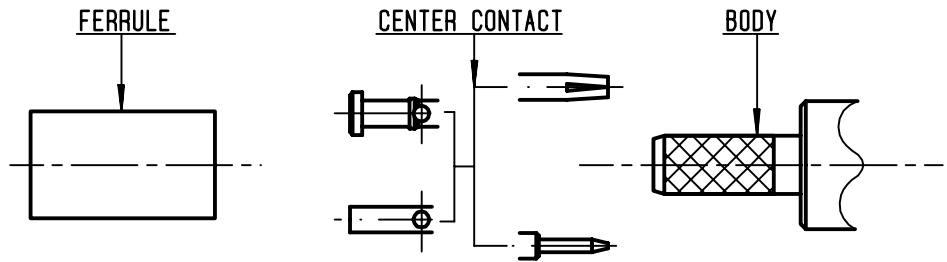
The information given here is subject to change without notice.
Design changes may be in order to improve the product .

Connect to the future



R129.087.100

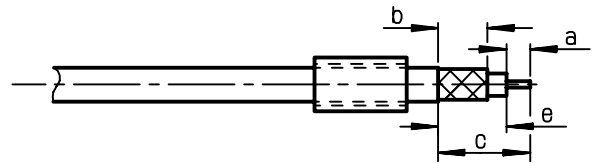
ISSUE **9648A00** SERIES **V1.6-5.6**



①

Slide ferrule onto cable
Strip the cable .

-
-



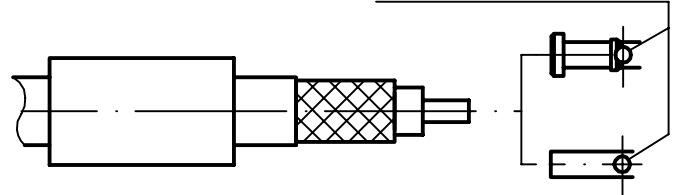
Stripping	a	b	c	d	e
inch	0.157	0.236	0.512	0	0.354
mm	4	6	13		9

②

Slide center contact on until it bottoms against cable dielectric .
Solder or crimp center contact .
Crimping tool : R282 281 + positionner R282 968 000 - position 5

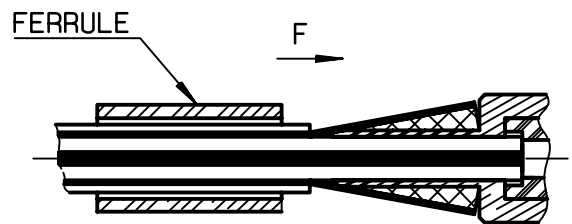
-
-

SOLDER / CRIMPING



③

Fan the braid .
Slide cable into the body until bottoms against insulator .
Slide ferrule over the braid .
(In direction F)



④

Crimp the ferrule with crimping tool R 282 287 000 + die set R282 265 004 (Hex. 6.81)

-
Cut excess of braid if necessary .

-
-
-
-

